



SMART SALINITY SENSOR

TYPE IC/SB-S21

MARINE ELECTRIC SYSTEMS, INC., is proud to introduce its 21st century, “*Smart Salinity Sensor.*” The user-friendly, microprocessor based sensor, incorporates features not found in any other system.

SMART SALINITY SENSOR: Designed to operate as either a stand alone salinity sensor or as part of a complete, state-of-the-art, salinity monitoring, alarm, and control system. The sensor features:

- A local 3 digit, color coded, LED display with visual display status lamps
- Continuous real-time temperature or salinity concentration readings
- Operation from ship’s 24VDC console power or external power supply
- System start-up self diagnostics
- Software controlled, user selectable: display parameters (PPM, or uS/cm or temperature), meter range, low/high alarm level set points, individual “channel to dump circuit” connect function, “normal” and “alarm” condition sampling rates and individual channel or system data and print download
- 24 hours of “First In/First Out” (FI/FO) memory storage
- Remote RS-485 communication port for data download via fiber optics

**SALINITY & CONTROL
ALARM SYSTEMS**

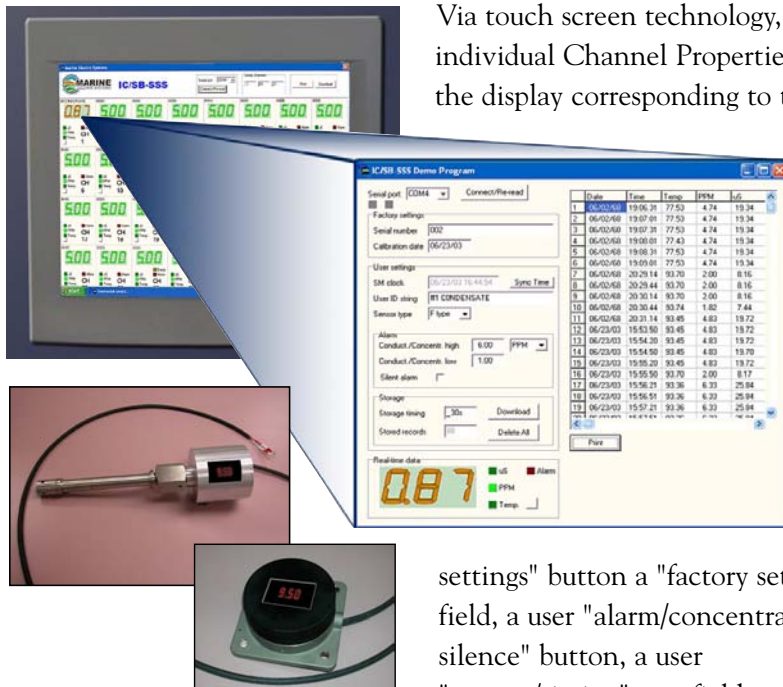
SMART SALINITY SENSOR

TYPE IC/SB-S21

...continued

- Remote isolated 4-20mADC output (system supplied excitation voltage)
- Remote 0-10 VDC output
- Remote 0-1mADC output
- Dynamic cell/system functional check via a selectable multiple point cell test resistor (Type CTR-MP21)
- Optional remote housing (temperature dependent)

SMART SALINITY SYSTEM: When interfaced to the mating, user friendly, windows based, software program, the IC/SB-S21, becomes an integral part of a complete salinity monitoring, alarm and control system. The software consists of a "System Home Page" and individual "Channel Properties Pages." The Home Page includes: 36 separate, location identified, color coded, channel displays, i.e., **green** (good water), **amber** (exceeded low alarm set point) and **red** (exceeded high alarm set point), a "print button," and a "download data button," allowing the user to download or print data from all channels, simultaneously. The Home Page also allows the user to select any three channels for connection to a remote "dump function module," while activating each display's respective "dump status," lamp.



Via touch screen technology, the user can view any of the individual Channel Properties pages by simply "touching" the display corresponding to the channel to be viewed, and

"retouching" the display to return to the Home Page.

When on screen, each individual Channel Properties Page consists of: a corresponding color coded display, an "event" field with PPM, uS/cm & Temperature data, a "channel serial number" field, a user "connect/re-read" activate button a "factory

settings" button a "factory settings" field, a "user settings" field, a user "alarm/concentration" select field, an "alarm silence" button, a user "storage/timing" rate field, and a "print" button.



33 B Route 17S
East Rutherford, NJ 07073
phone: (201) 531-8600
fax: (201) 531-8606